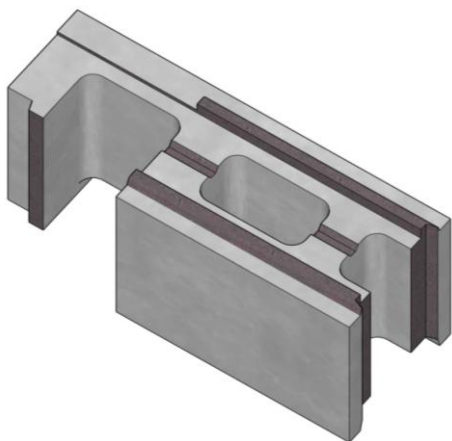
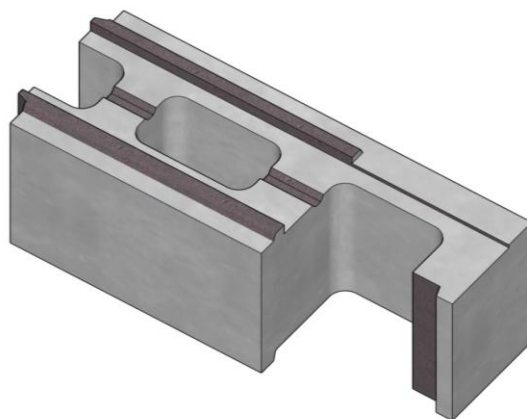


**LIVING
BLOCKS**
CHB

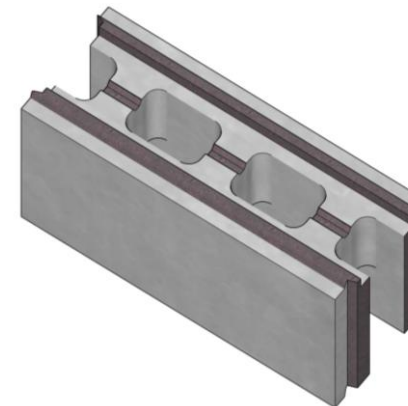
“Next-Generation Load-Bearing Concrete Block
Manufactured in the Philippines”



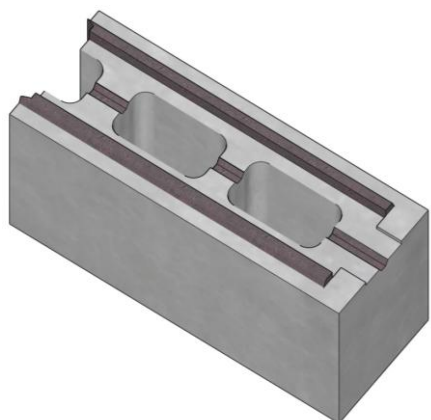
• LEFT CORNER BLOCK



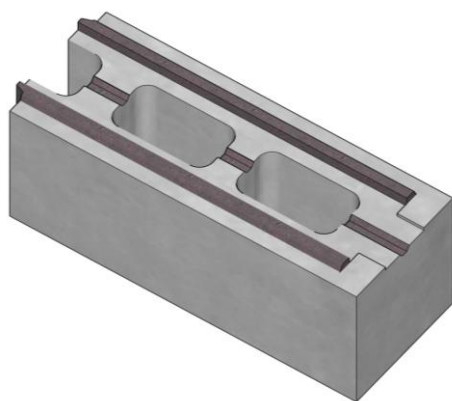
• RIGHT CORNER BLOCK



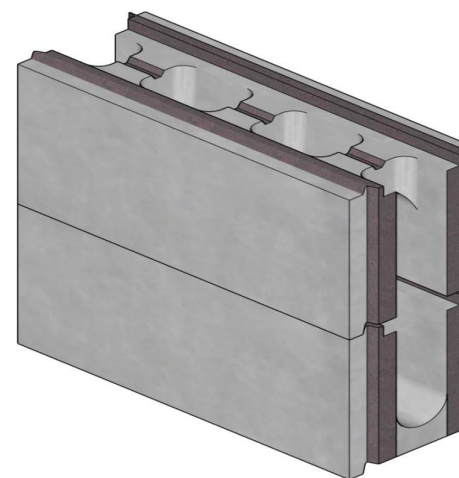
• STRETCHER BLOCK



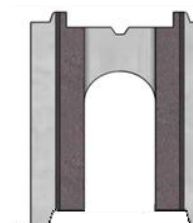
• LEFT END BLOCK



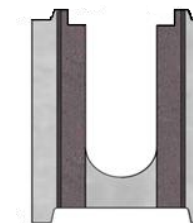
• RIGHT END BLOCK



• BEAM BLOCK

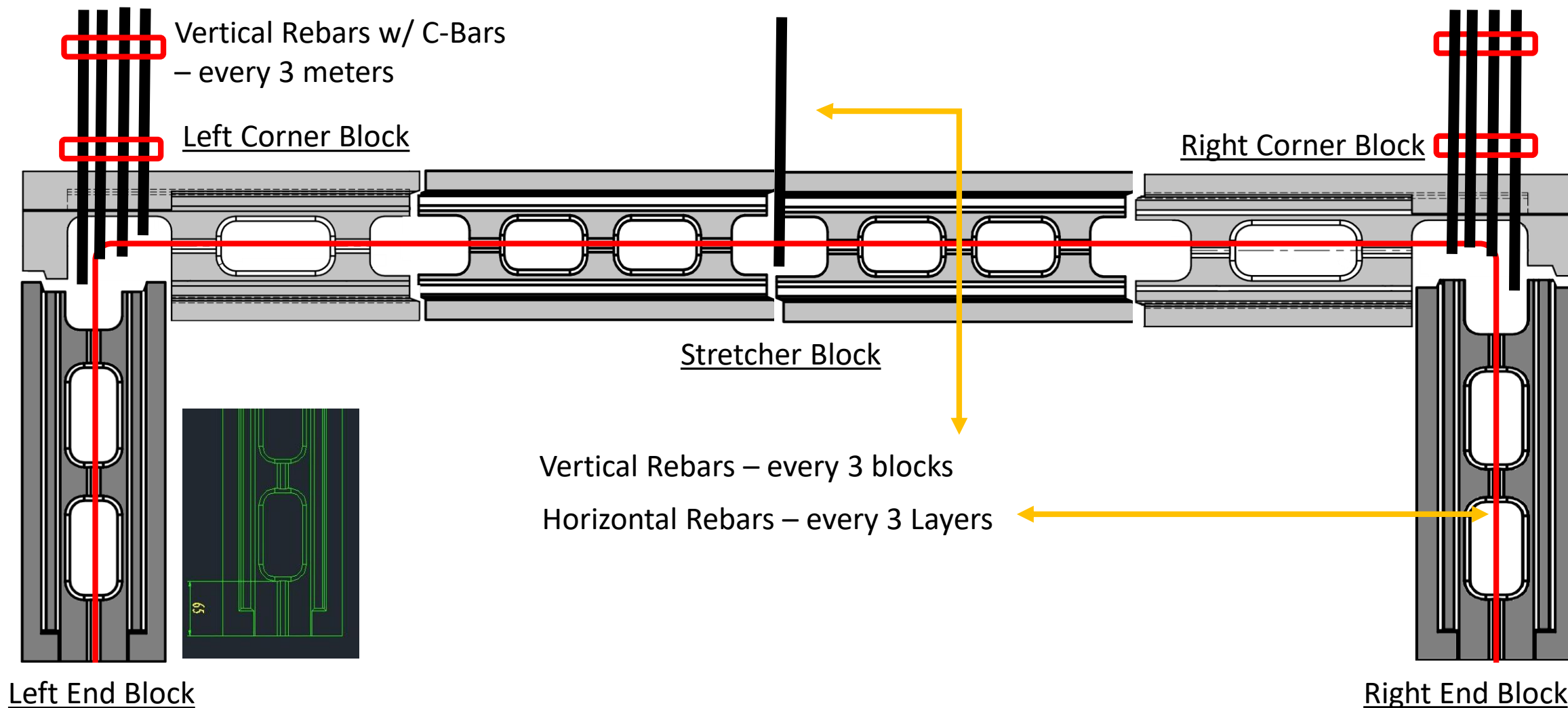


• Top Beam block



• Bottom Beam Block

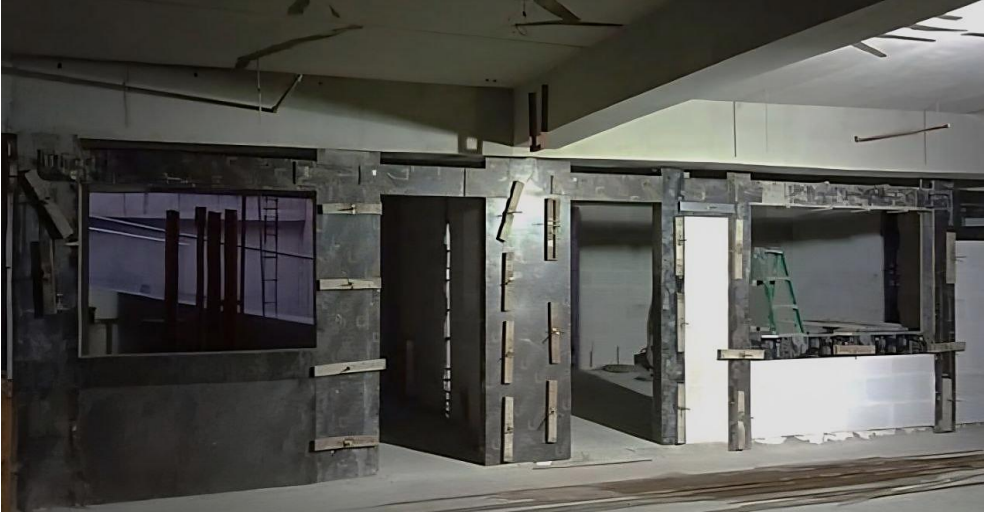
**** INTERLOCKING SYSTEM ****



AAC BLOCKS vs LIVING BLOCKS

** AAC BLOCKS **

- DOOR AND WINDOW BEAMS AND COLUMN

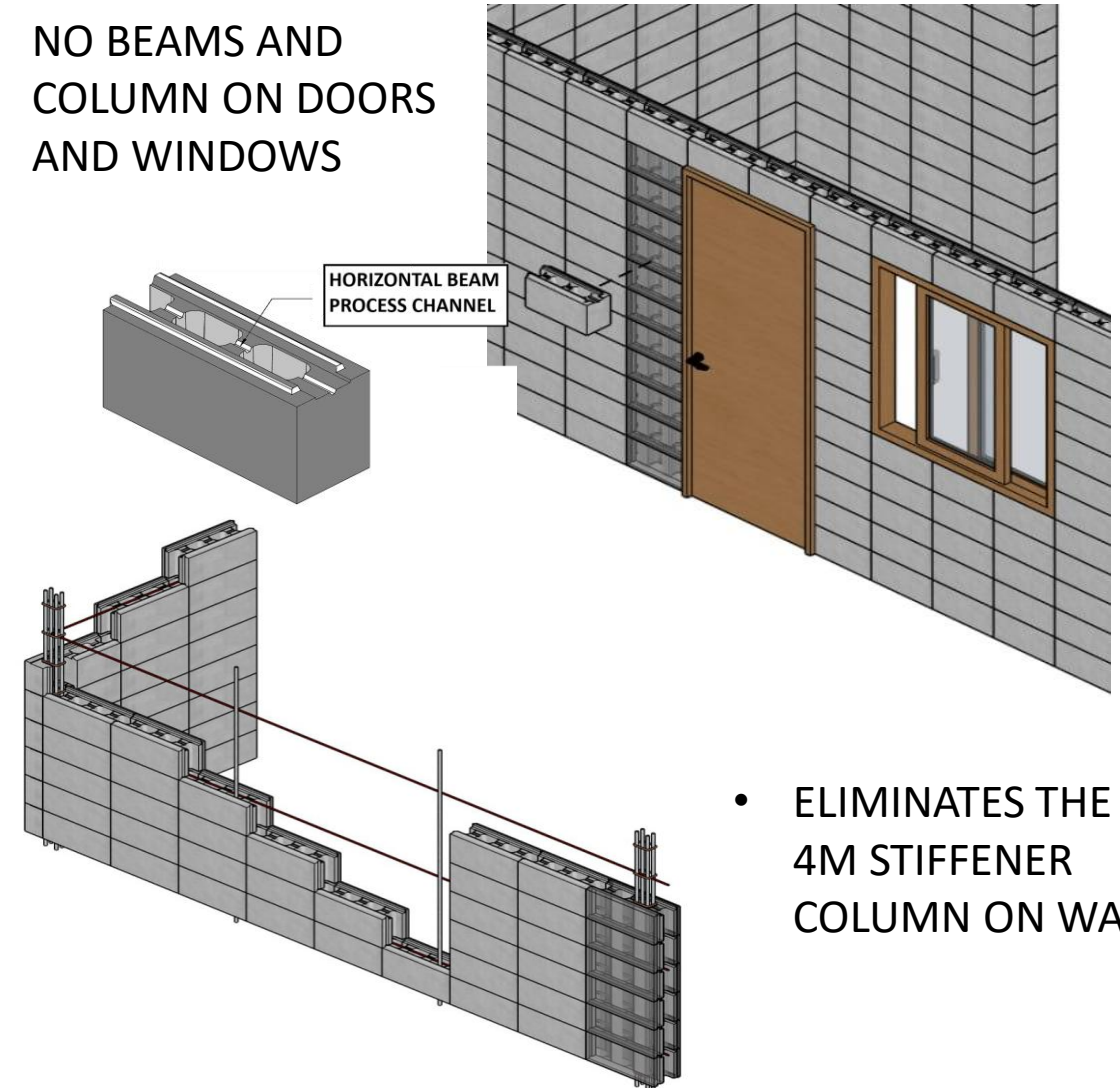


- CONCRETE POURING ON COLUMNS



** LIVING BLOCKS **

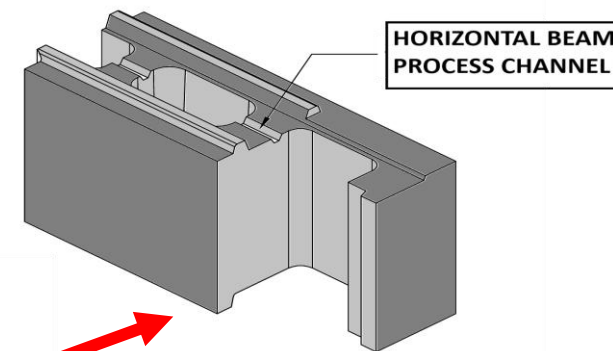
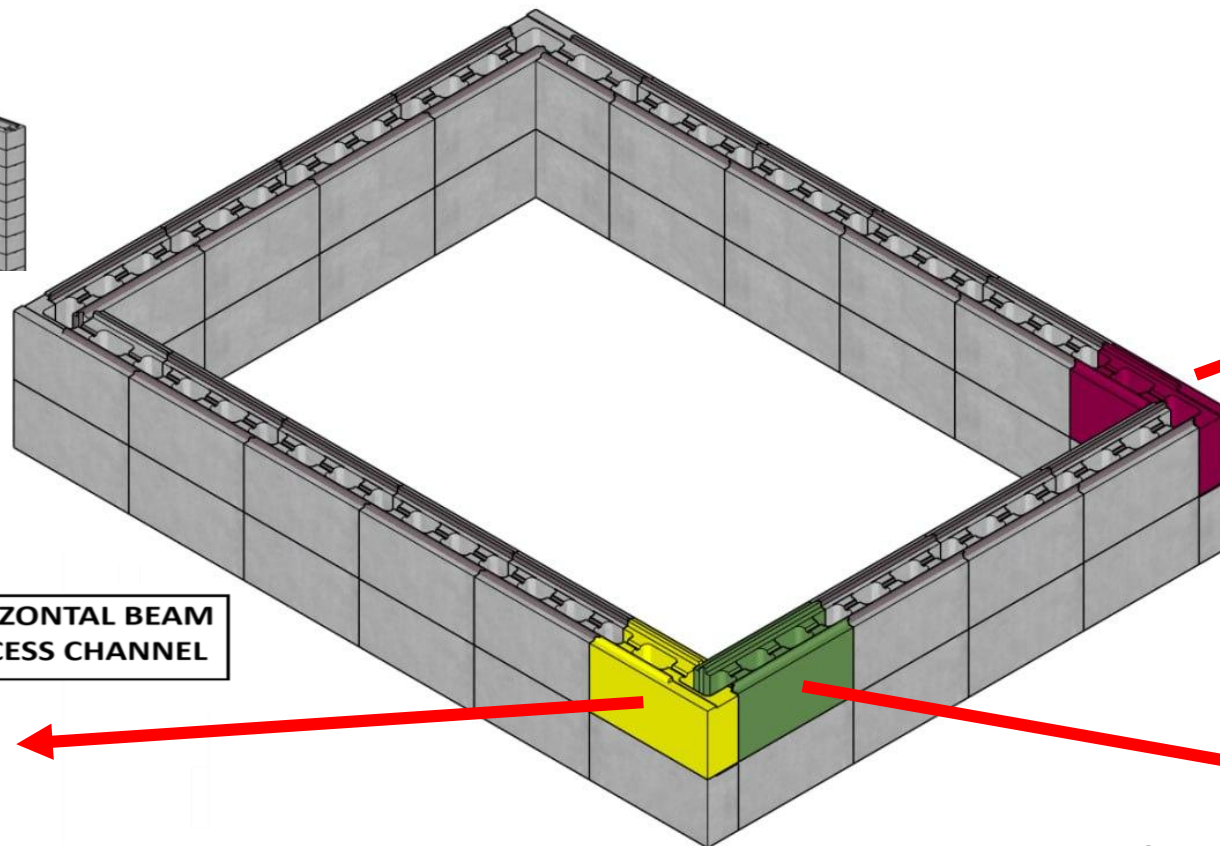
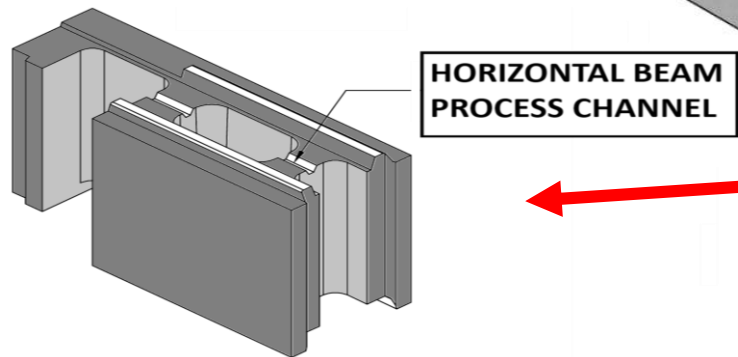
- NO BEAMS AND COLUMN ON DOORS AND WINDOWS



- ELIMINATES THE 3M/4M STIFFENER COLUMN ON WALLS

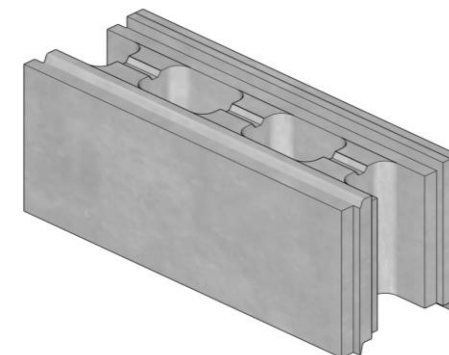


- Left Corner block

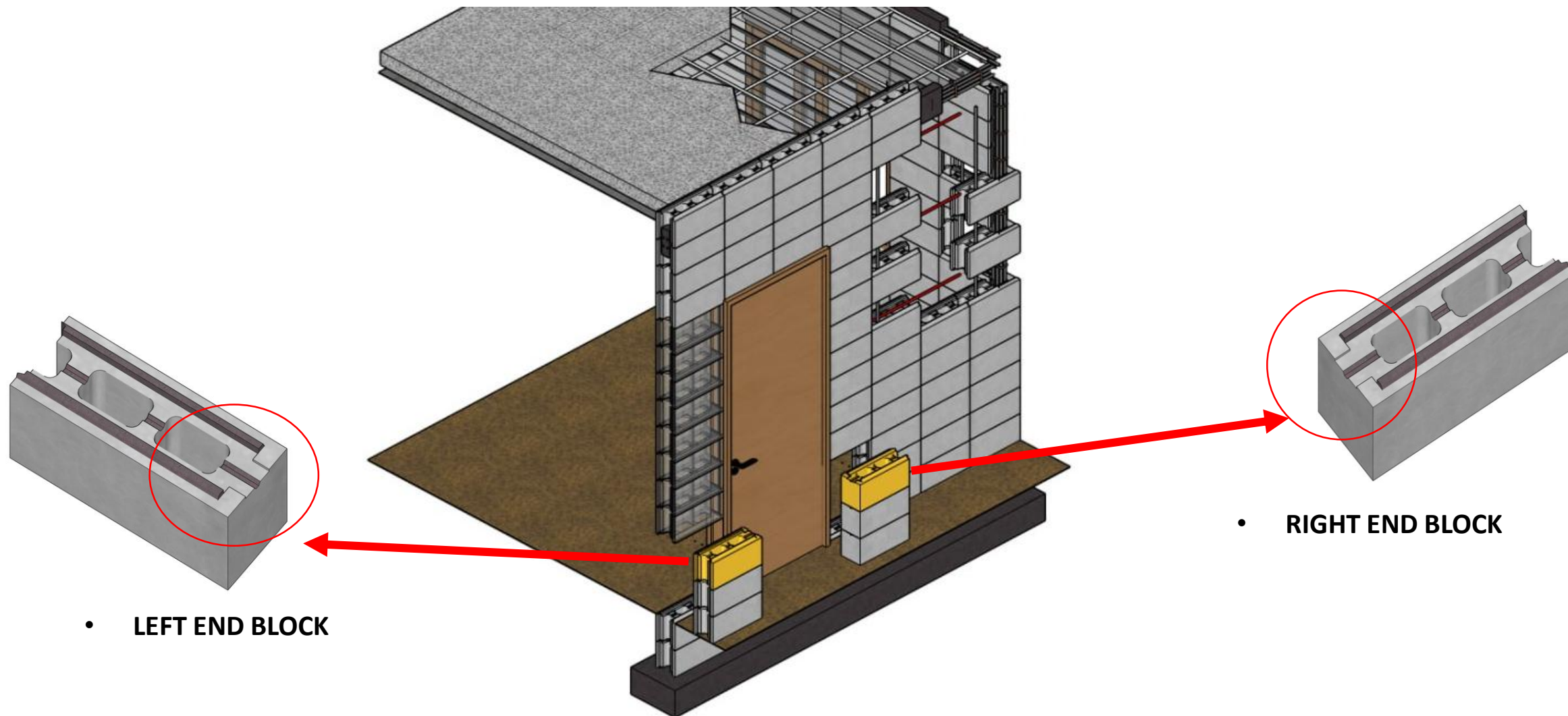


- Right Corner block

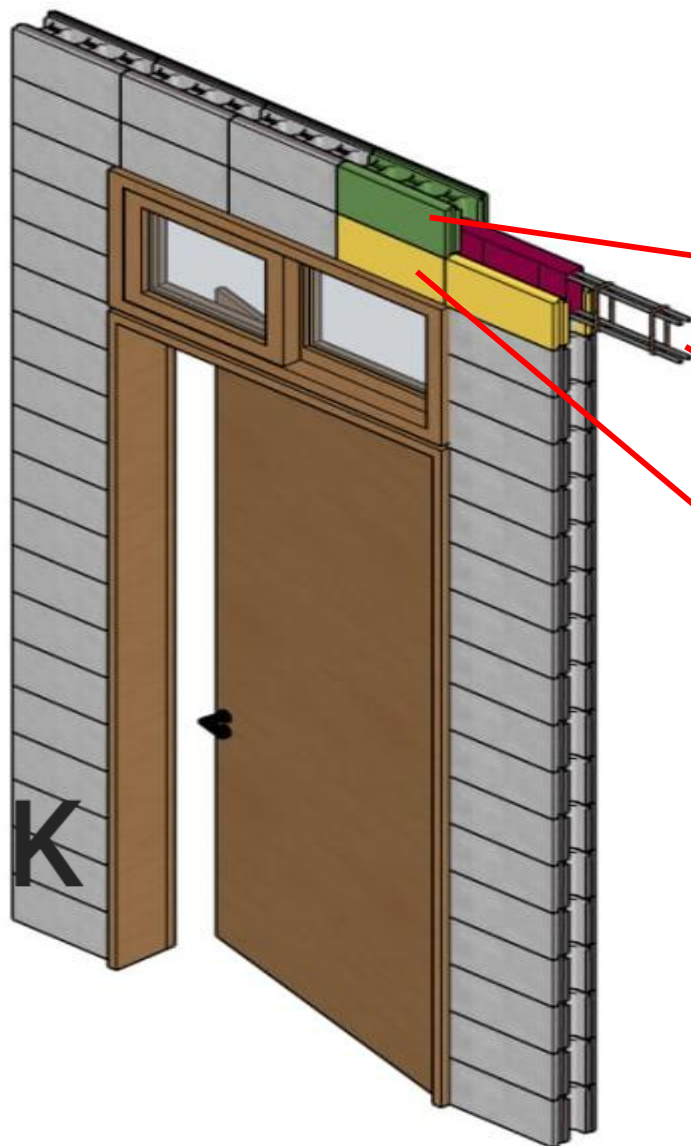
- Stretcher block



- **END Block**

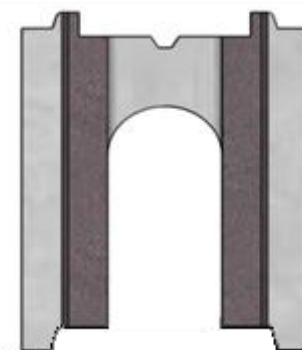


• BEAM BLOCK



1

Top Beam block



2

Stirrups / Rebars



3

Bottom Beam block

